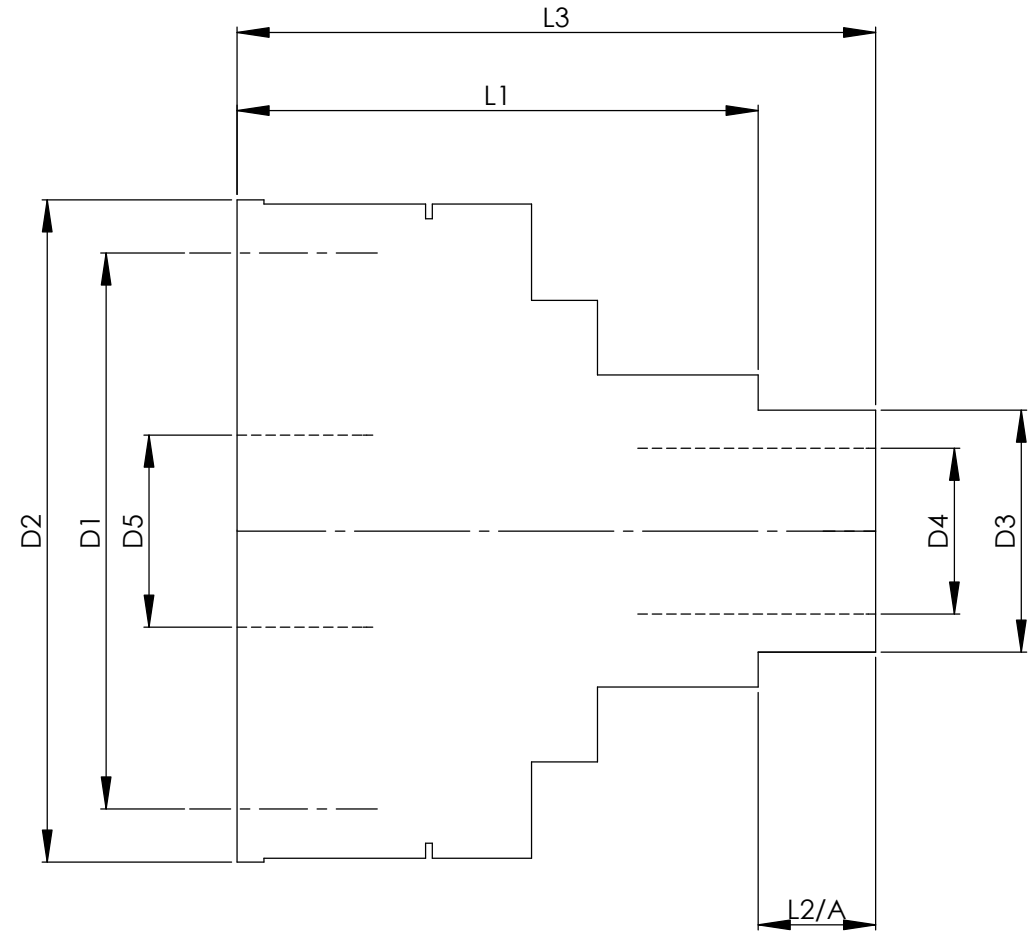


		INCH	MM
CROWN WHEEL BOLT PCD	D1	4.129	104.8
No. OF BOLTS		12	12
THREAD / THRO' HOLE		M10x1.25	M12x1.25
CROWN WHEEL SPIGOT DIA	D2	5.042	128.0
BEARING DIA	D3	1.8125	46.0
BEARING DISTANCE	L1	2.848	72.3
SPIGOT LENGTH	L2	0	0
	L2/A	0.760	19.3
OVERALL LENGTH	L3	3.608	91.6
BEARING/CROWN WHEEL	L4	0	0
BORE	D4	1.3833	35.1
	D5	2.218	56.3
DRIVE SHAFT SPLINE:-			
No. OF TEETH		43	
PITCH		32/64 DP	
TYPE		FILLET ROOT	SIDE FIT
PRESSURE ANGLE		45 DEG	



TITLE F.W.D. DIFF DATA SHEET.
SCALE 1:1 U.O.S. SHEET 1 OF 1
Drg. No. QDF9Q

**Quaife Design & Development.**

IF IN DOUBT, ASK.

THIS DRAWING OR DESIGN IS STRICTLY CONFIDENTIAL & THE COPYRIGHT THEREIN IS THE EXCLUSIVE PROPERTY OF R.T. QUAIFF ENGINEERING LTD. AND MAY NOT BE USED COPIED OR EXHIBITED WITHOUT THEIR WRITTEN PERMISSION.

FINISH. MACH,	GRIND@G
LIMITS. FRACT. ± 1/64".	
DEC. ± 0.005".	
MATERIAL.	
TREATMENT.	
ISSUE. 01 DATE. 19.5.05	
DRAWN BY. M.L.M.	
<b>Used In.</b>	PORSCHE TIPTRONIC