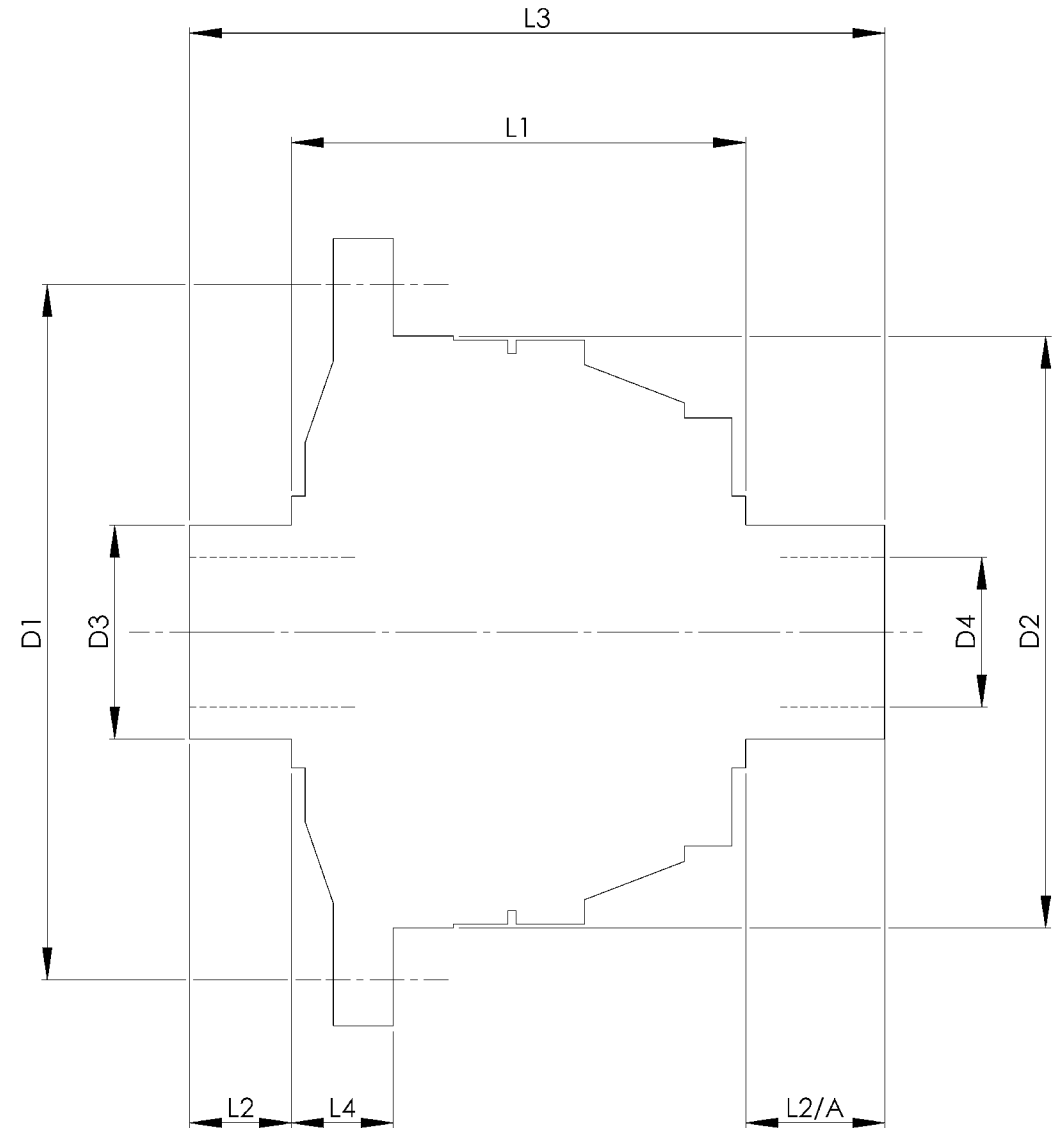


		INCH	MM
CROWN WHEEL BOLT PCD	D1	4.921	125
No. OF BOLTS		10	10
THREAD / THRO' HOLE		M10x1 LH	M10x1 LH
CROWN WHEEL SPIGOT DIA	D2	4.1732	106.0
BEARING DIA	D3	1.575	40.0
BEARING DISTANCE	L1	3.425	87.0
SPIGOT LENGTH	L2	0.825	21.0
	L2/A	1.098	27.9
OVERALL LENGTH	L3	5.348	135.8
BEARING/CROWN WHEEL	L4	0.535	13.6
BORE	D4	1.0241	26.0
DRIVE SHAFT SPLINE:-			
No. OF TEETH		25	
PITCH		1 MOD.	
TYPE			
PRESSURE ANGLE		37.5 DEG	



TITLE F.W.D. DIFF DATA SHEET.

SCALE 1:1 U.O.S. SHEET 1 OF 1

Drg. No. QDF7U

Quaife Design & Development.

IF IN DOUBT, ASK.

THIS DRAWING OR DESIGN IS STRICTLY CONFIDENTIAL & THE COPYRIGHT THEREIN IS THE SOLE PROPERTY OF QUAIFE DESIGN & DEVELOPMENT LTD. AND MAY NOT BE USED, COPIED OR REPRODUCED WITHOUT THE WRITTEN PERMISSION.

FINISH. MACH. GRIND@G
 LIMITS. FRACT. ± 1/64".
 DEC. ± 0.005".
 MATERIAL.
 TREATMENT.
 ISSUE. 01 DATE. 18.5.05
 DRAWN BY. M.L.M.

Used In. HONDA CIVIC/SRX Si/ EX Models
 88-99, except 90-91 Si 40mm Brgs