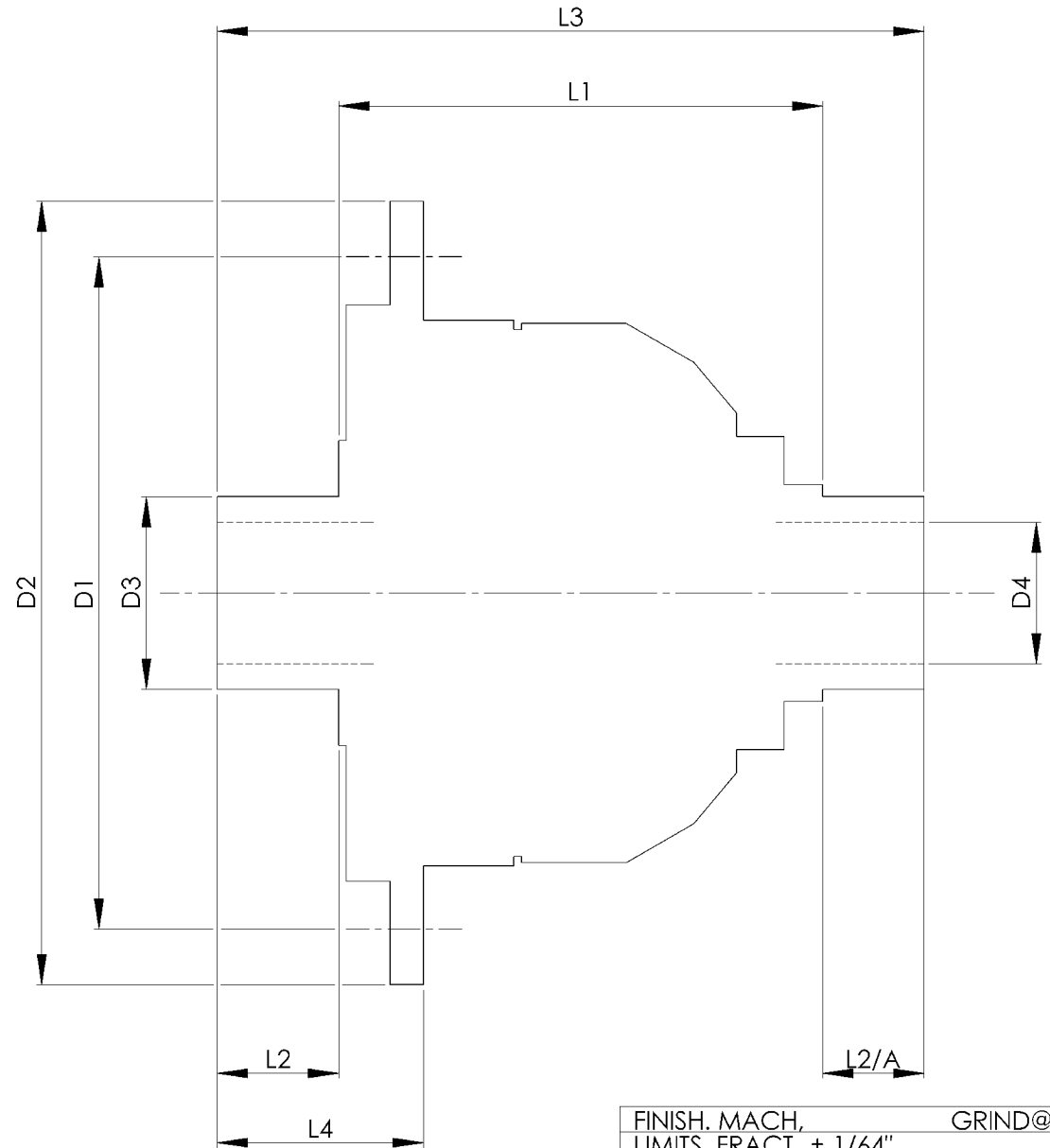


		INCH	MM
CROWN WHEEL BOLT PCD	D1	5.709	145
No. OF BOLTS		10	10
THREAD / THRO' HOLE		0.417	10.6
CROWN WHEEL SPIGOT DIA	D2	6.6145	168.0
BEARING DIA	D3	1.6154	41.0
BEARING DISTANCE	L1	4.650	118.1
SPIGOT LENGTH	L2	0.727	18.5
	L2/A	0.725	18.4
OVERALL LENGTH	L3	6.102	155.0
BEARING/CROWN WHEEL	L4	1.420	36.1
BORE	D4	1.1802	30.0
DRIVE SHAFT SPLINE:-			
No. OF TEETH		26	
PITCH		24/48 DP	
TYPE		FILLET ROOT	SIDE FIT
PRESSURE ANGLE		45 DEG	



TITLE F.W.D. DIFF DATA SHEET.
SCALE 1:1 U.O.S. SHEET 1 OF 1
<b>Drg. No. QDF41Z</b>

**Quaife Design & Development.**

IF IN DOUBT, ASK.

THIS DRAWING OR DESIGN IS STRICTLY CONFIDENTIAL & THE COPYRIGHT THEREIN IS THE EXCLUSIVE PROPERTY OF QUAIFE DESIGN & DEVELOPMENT LTD. AND MAY NOT BE USED, COPIED OR REPRODUCED WITHOUT THE WRITTEN PERMISSION.

FINISH. MACH,	GRIND@G
LIMITS. FRACT. ± 1/64".	
DEC. ± 0.005".	
MATERIAL.	
TREATMENT.	
ISSUE. 01 DATE. 18.5.05	
DRAWN BY. M.L.M.	
<b>Used In.</b>	FORD ST220