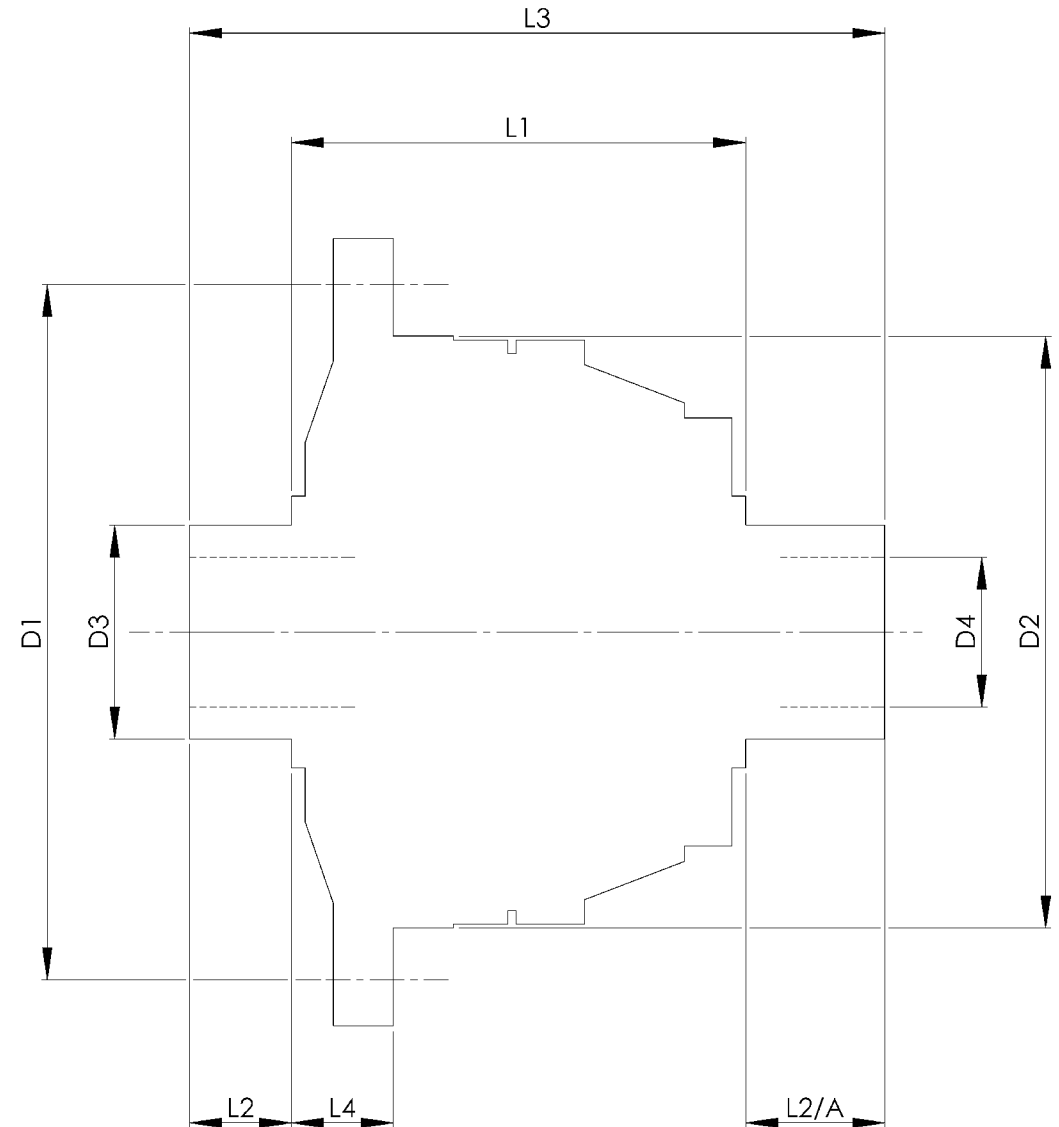


		INCH	MM
CROWN WHEEL BOLT PCD	D1	4.724	120
No. OF BOLTS		10	10
THREAD / THRO' HOLE		M10x1 LH	M10x1 LH
CROWN WHEEL SPIGOT DIA	D2	3.858	98.0
BEARING DIA	D3	1.378	35.0
BEARING DISTANCE	L1	3.540	90.0
SPIGOT LENGTH	L2	0.830	21.1
	L2/A	0.980	24.9
OVERALL LENGTH	L3	5.350	135.9
BEARING/CROWN WHEEL	L4	1.150	29.2
BORE	D4	1.0241	26.0
DRIVE SHAFT SPLINE:-			
No. OF TEETH		25	
PITCH		1 MOD.	
TYPE			
PRESSURE ANGLE		37.5 DEG	



TITLE F.W.D. DIFF DATA SHEET.

SCALE 1:1 U.O.S. SHEET 1 OF 1

Drg. No. QDF3U

Quaife Design & Development.

IF IN DOUBT, ASK.

THIS DRAWING OR DESIGN IS STRICTLY CONFIDENTIAL & THE COPYRIGHT THEREIN IS THE EXCLUSIVE PROPERTY OF M.L.M. ENGINEERING. IT IS TO BE KEPT IN STRICTLY CONFIDENTIAL AND MAY NOT BE USED, COPIED OR REPRODUCED WITHOUT THE WRITTEN PERMISSION.

FINISH. MACH, GRIND@G
 LIMITS. FRACT. ± 1/64".
 DEC. ± 0.005".
 MATERIAL.
 TREATMENT.
 ISSUE. 01 DATE. 18.5.05
 DRAWN BY. M.L.M.
Used In. HONDA CIVIC CITY