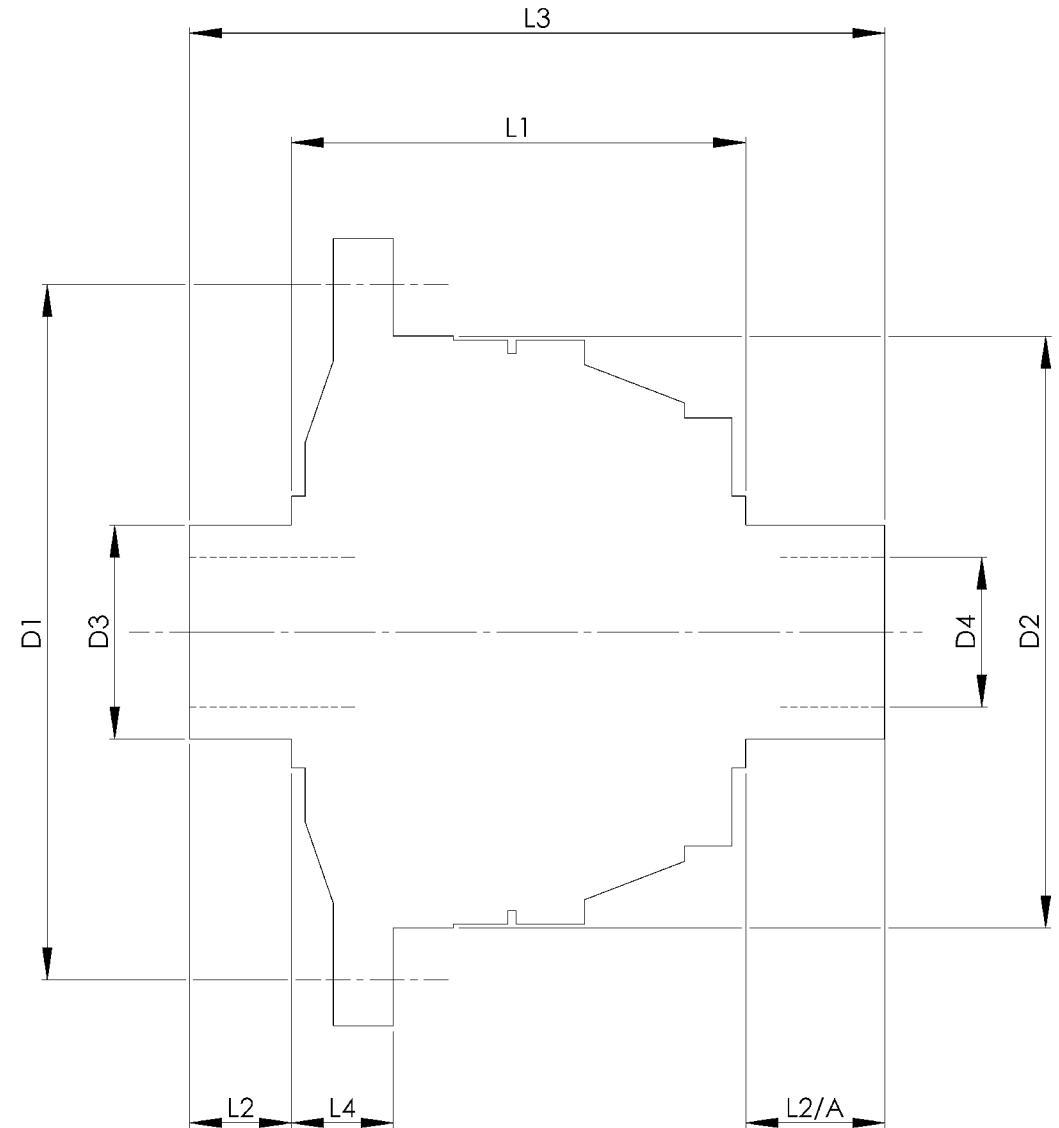


		INCH	MM
CROWN WHEEL BOLT PCD	D1	5.512	140
No. OF BOLTS		10	10
THREAD / THRO' HOLE		M10x1.5	M10x1.5
CROWN WHEEL SPIGOT DIA	D2	4.567	116
BEARING DIA	D3	1.6266	41.3
BEARING DISTANCE	L1	3.650	92.7
SPIGOT LENGTH	L2	0.745	18.9
	L2/A	0.745	18.9
OVERALL LENGTH	L3	5.140	130.5
BEARING/CROWN WHEEL	L4	0.610	15.5
BORE	D4	1.068	27.1
DRIVE SHAFT SPLINE:-			
No. OF TEETH		34	
PITCH		32/64 DP	
TYPE		FILLET ROOT	SIDE FIT
PRESSURE ANGLE		30 DEG	



TITLE F.W.D. DIFF DATA SHEET.
SCALE 1:1 U.O.S. SHEET 1 OF 1
Drg. No. QDF38Z

Quaife Design & Development.

IF IN DOUBT, ASK.

THIS DRAWING OR DESIGN IS STRICTLY CONFIDENTIAL & THE COPYRIGHT THEREIN IS THE EXCLUSIVE PROPERTY OF BMW MINI COOPER LTD. ANY UNAUTHORIZED REPRODUCTION OR USE OF THIS DRAWING WITHOUT THE WRITTEN PERMISSION OF BMW MINI COOPER LTD. IS PROHIBITED.

FINISH. MACH.	GRIND@G
LIMITS. FRACT. ± 1/64"	
DEC. ± 0.005"	
MATERIAL.	
TREATMENT.	
ISSUE. 01 DATE. 17.5.05	
DRAWN BY. M.L.M.	
Used In. BMW MINI COOPER S	
(6 SPEED GETRAG)	