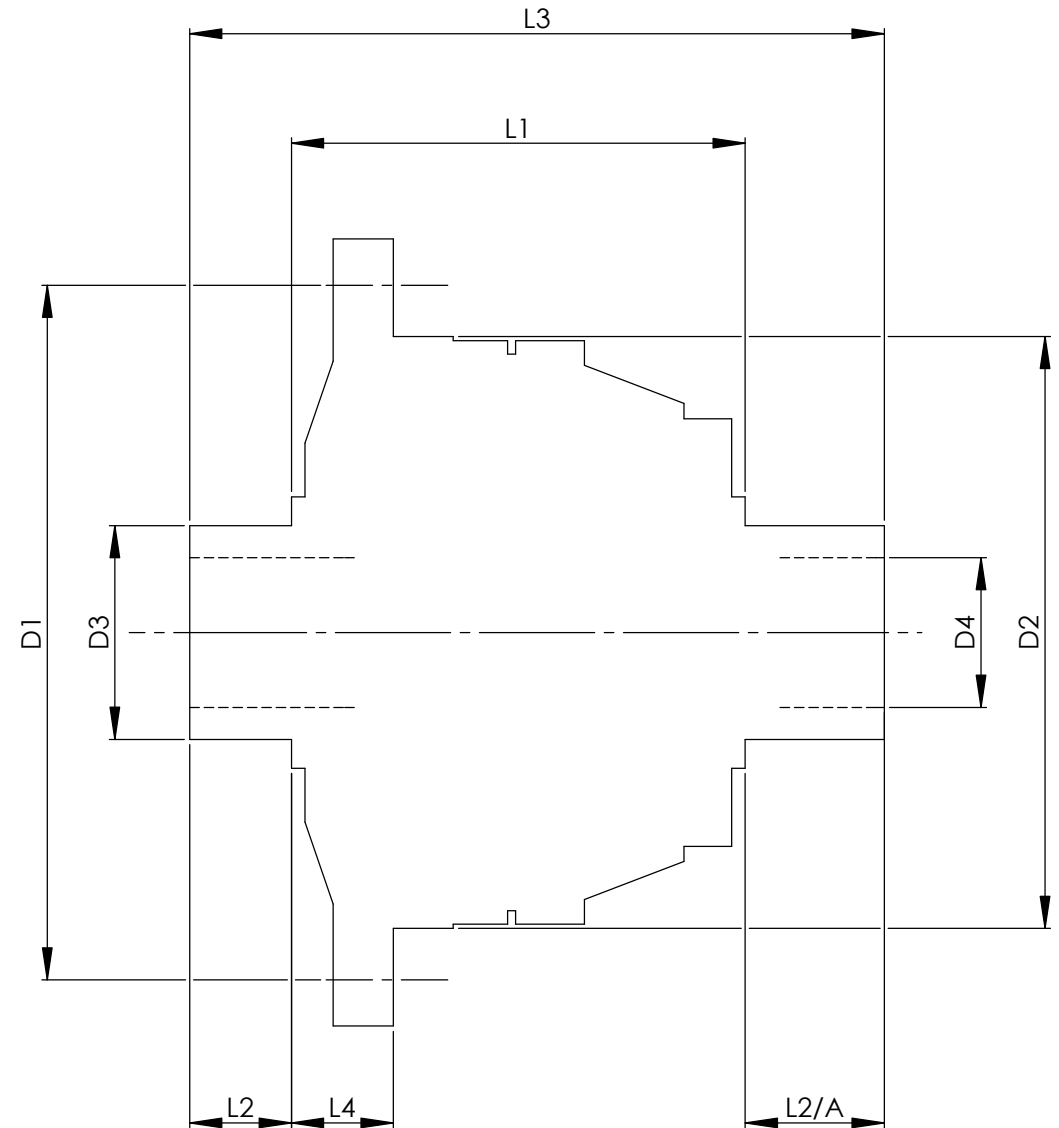


		INCH	MM
CROWN WHEEL BOLT PCD	D1	0	0
No. OF BOLTS		0	0
THREAD / THRO' HOLE		0	0
CROWN WHEEL SPIGOT DIA	D2	3.9380	100.0
BEARING DIA	D3	1.5750	40.0
BEARING DISTANCE	L1	4.478	113.7
SPIGOT LENGTH	L2	0.715	18.2
	L2/A	0.707	18.0
OVERALL LENGTH	L3	5.900	149.9
BEARING/CROWN WHEEL	L4	0.310	7.9
BORE	D4	1.1046	28.0
DRIVE SHAFT SPLINE:-			
No. OF TEETH		26	
PITCH			
TYPE			
PRESSURE ANGLE			



TITLE F.W.D. DIFF DATA SHEET.
SCALE 1:1 U.O.S. SHEET 1 OF 1
Drg. No. QDF11J

Quaife Design & Development.

IF IN DOUBT, ASK.

THIS DRAWING OR DESIGN IS STRICTLY CONFIDENTIAL & THE COPYRIGHT THEREIN IS THE EXCLUSIVE PROPERTY OF R.T. QUAIFF ENGINEERING LTD. AND MAY NOT BE USED COPIED OR EXHIBITED WITHOUT THEIR WRITTEN PERMISSION.

FINISH. MACH.	GRIND@G
LIMITS. FRACT. ± 1/64"	
DEC. ± 0.005"	
MATERIAL.	
TREATMENT.	
ISSUE. 01 DATE. 23.5.05	
DRAWN BY. M.L.M.	

Used In. VOLVO S60 (Rear)